



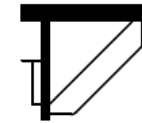
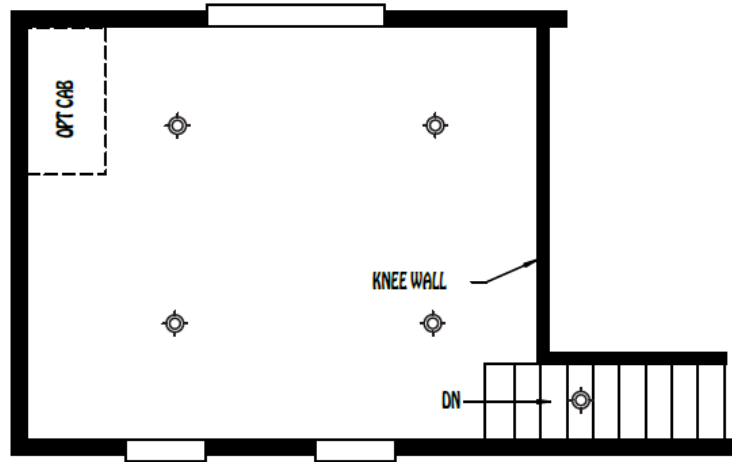
Creekside Cabins
Loft Series



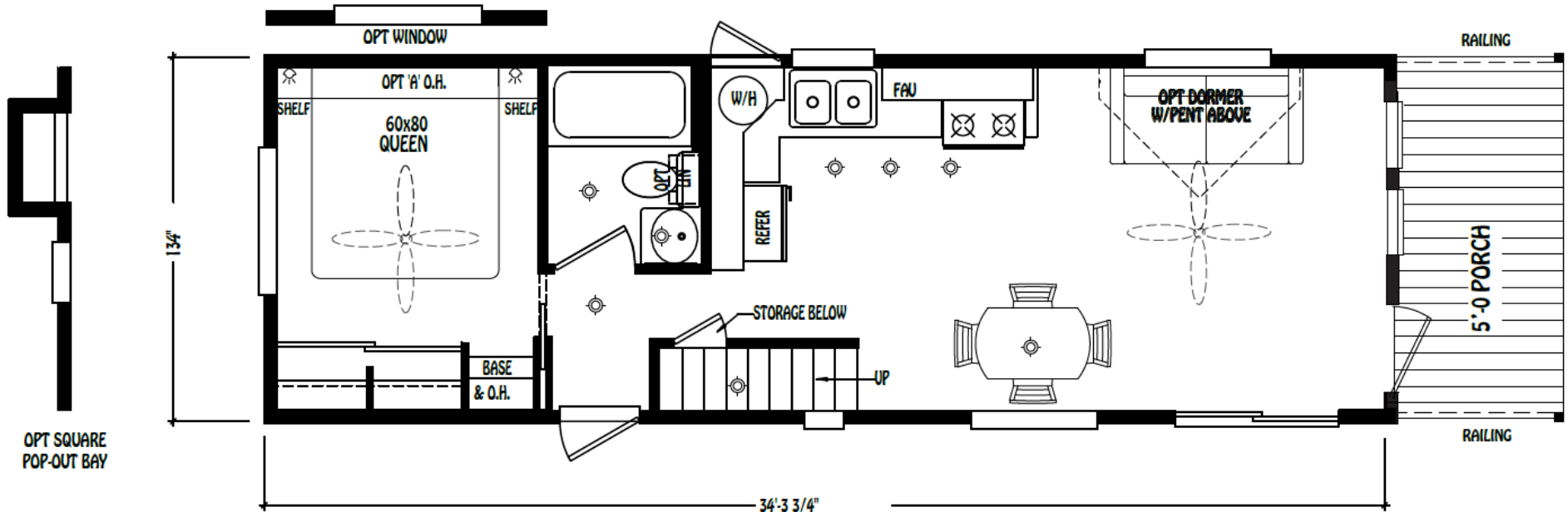
1-877-219-4059

4384 E I-30, Rockwall, Texas 75087

www.CabinSupercenter.com

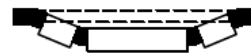


OPT TV BASE & O.H.

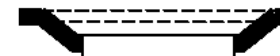


Creekside Cabin CC-9

Standard with Loft and 5' Front Porch



OPT 'D' BAY



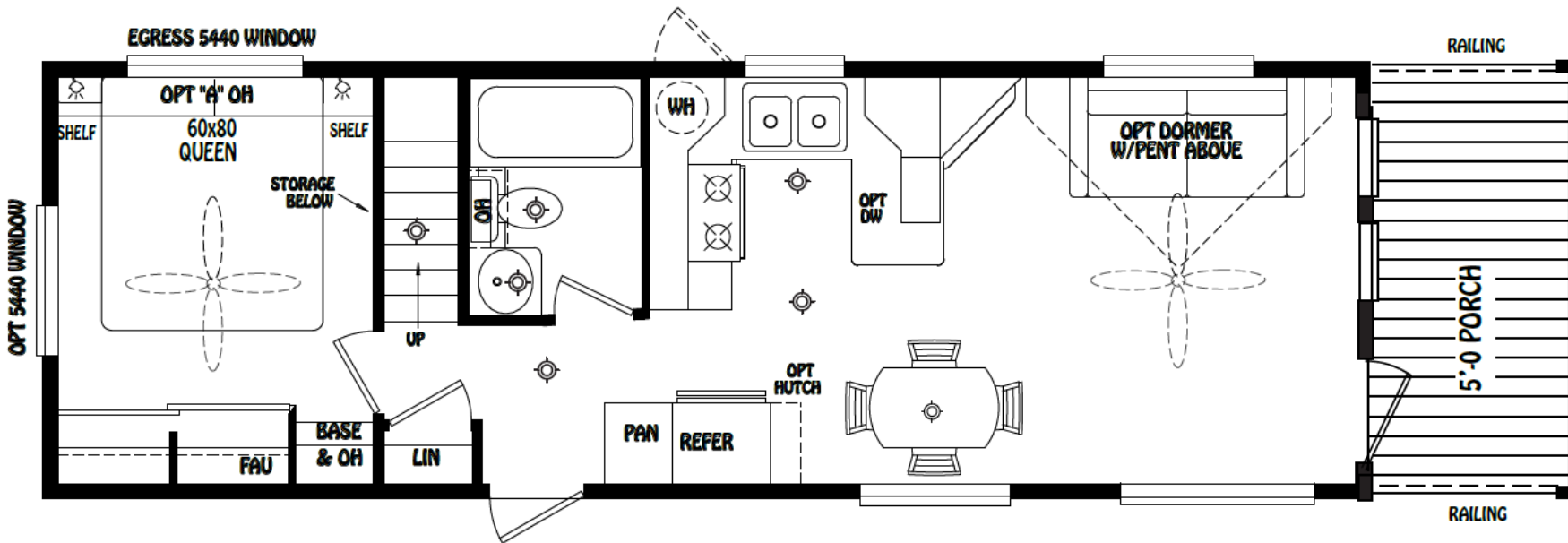
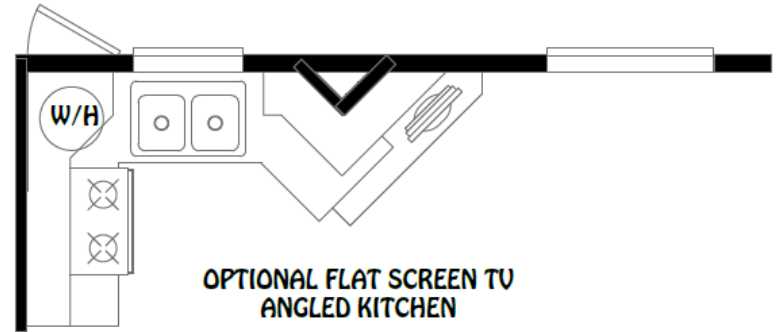
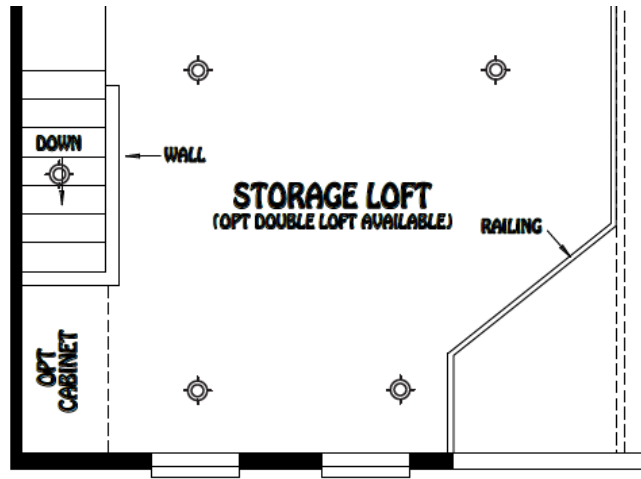
OPT 'F' BAY



1-877-219-4059

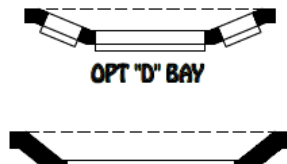
4384 E I-30, Rockwall, Texas 75087

www.CabinSupercenter.com



Creekside Cabin CC-10

Standard with Loft and 5' Front Porch

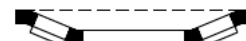
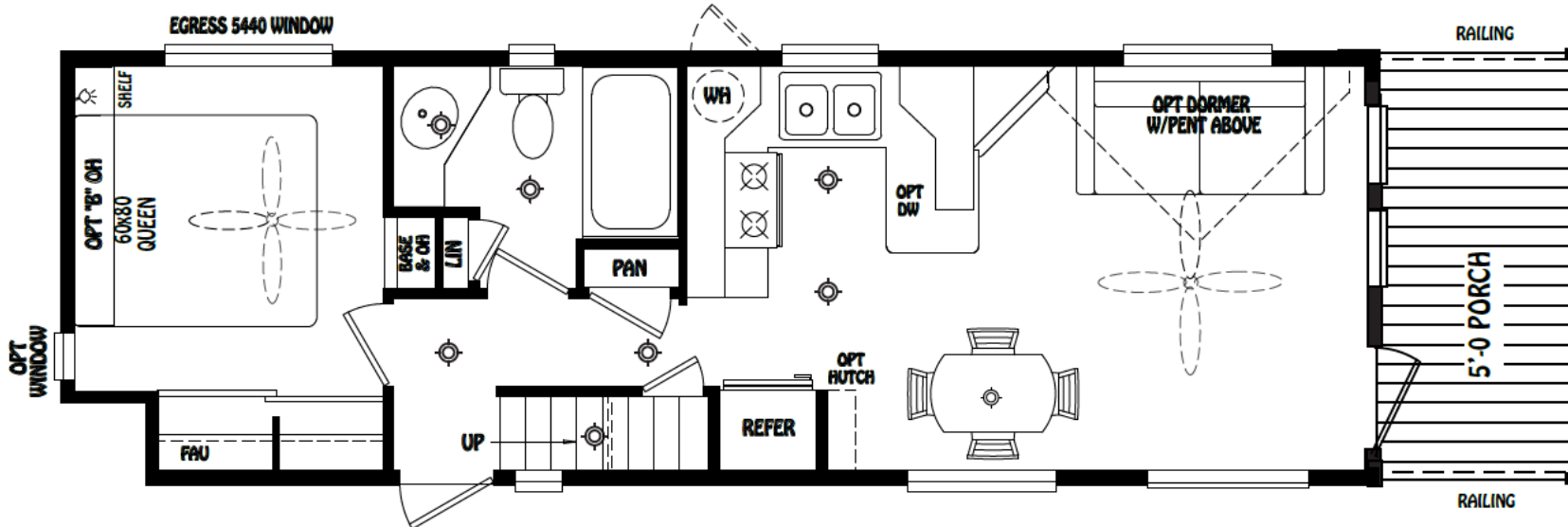
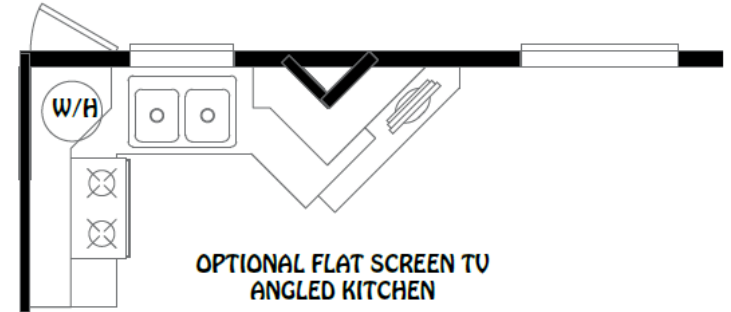
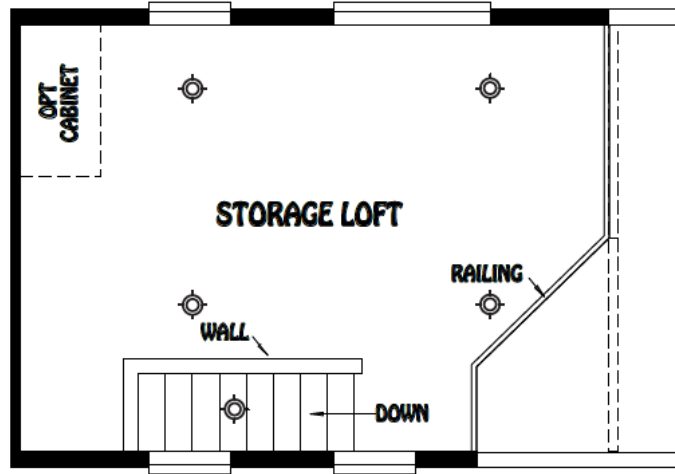




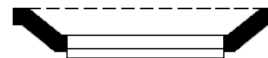
1-877-219-4059

4384 E I-30, Rockwall, Texas 75087

www.CabinSupercenter.com



OPT 'D' BAY



OPT 'F' BAY

Creekside Cabin CC-11

Standard with Loft and 5' Front Porch

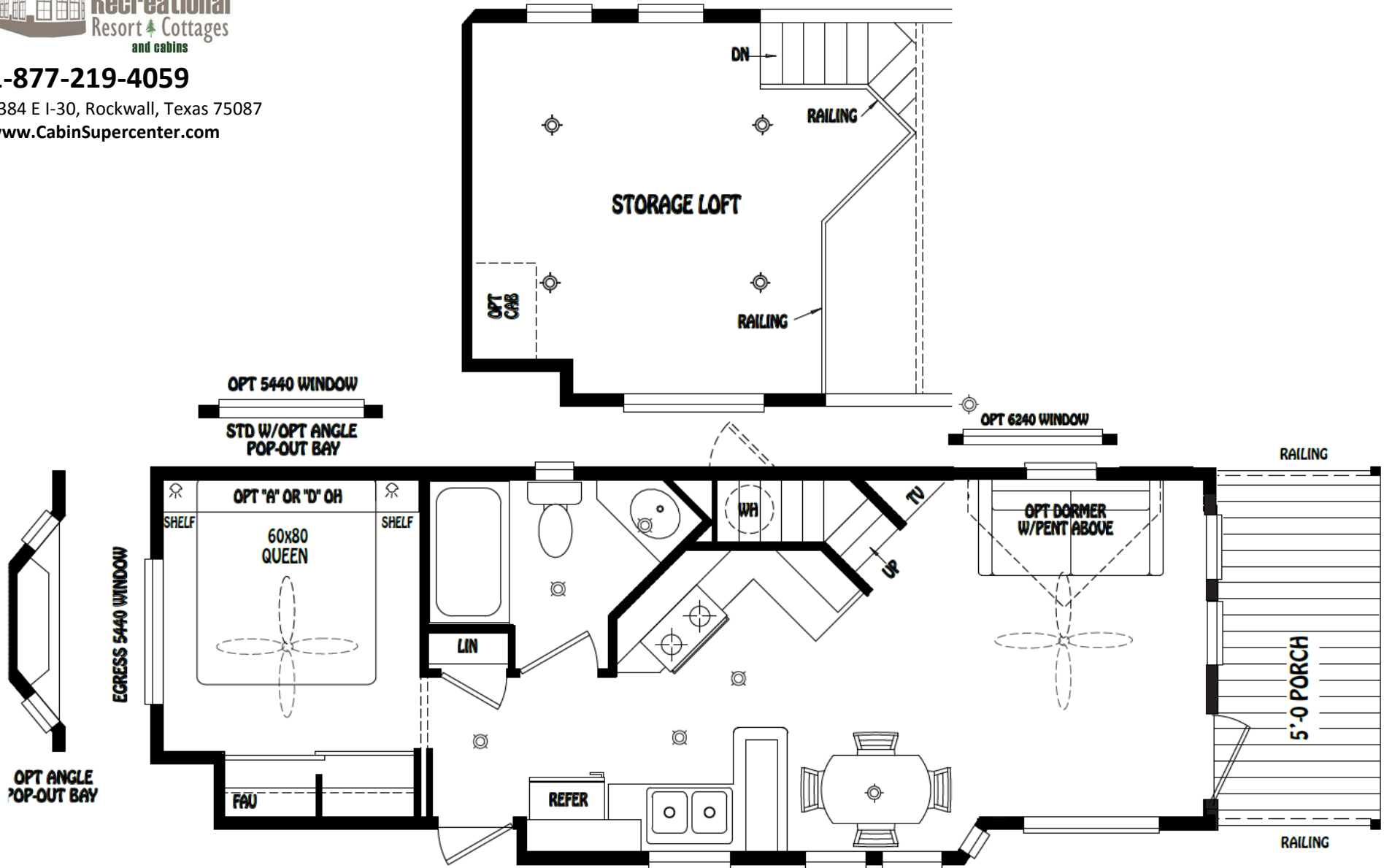


Recreational
Resort Cottages
and cabins

1-877-219-4059

4384 E I-30, Rockwall, Texas 75087

www.CabinSupercenter.com



Creekside Cabin CC-12

Standard with Loft and 5' Front Porch



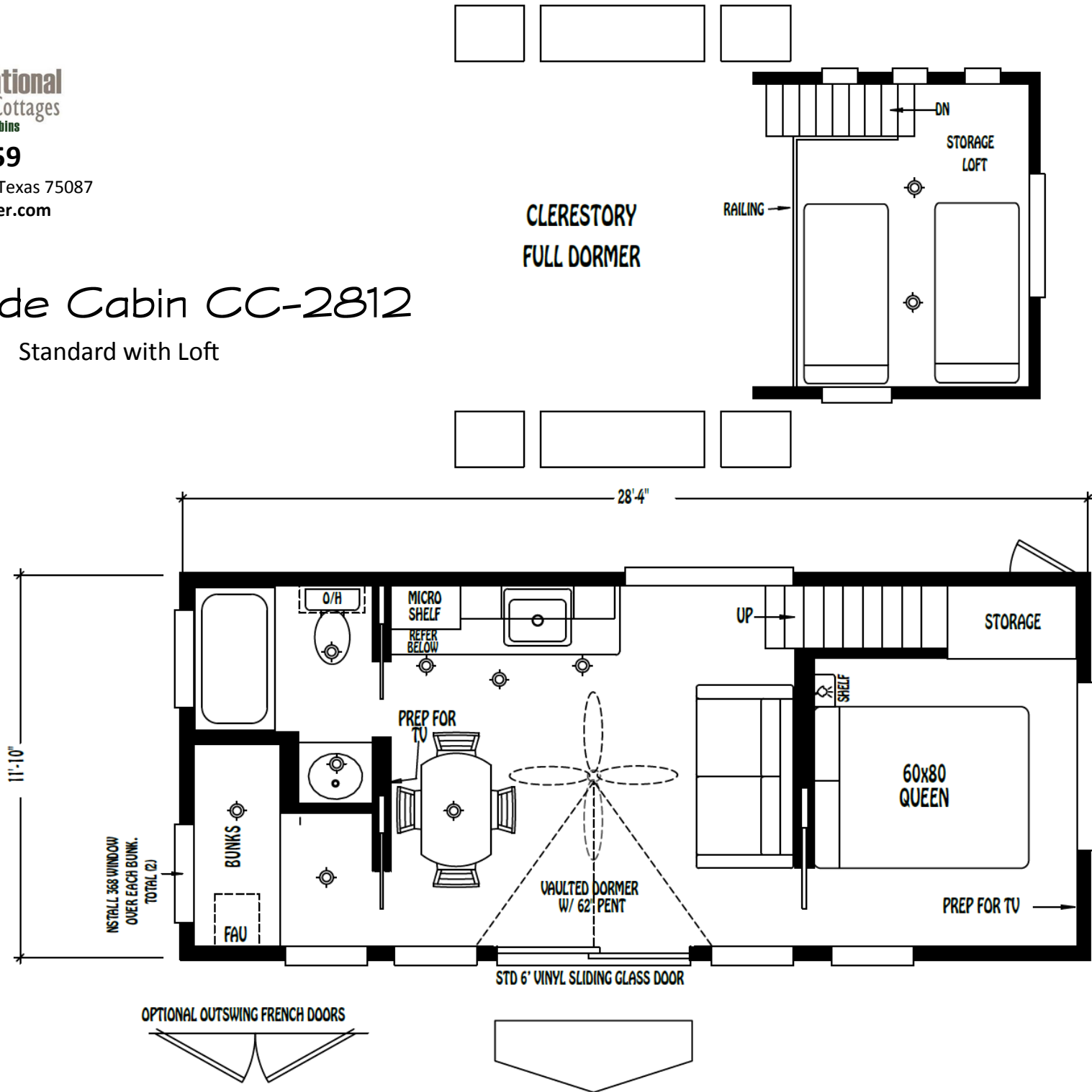
1-877-219-4059

4384 E I-30, Rockwall, Texas 75087

www.CabinSupercenter.com

Creekside Cabin CC-2812

Standard with Loft





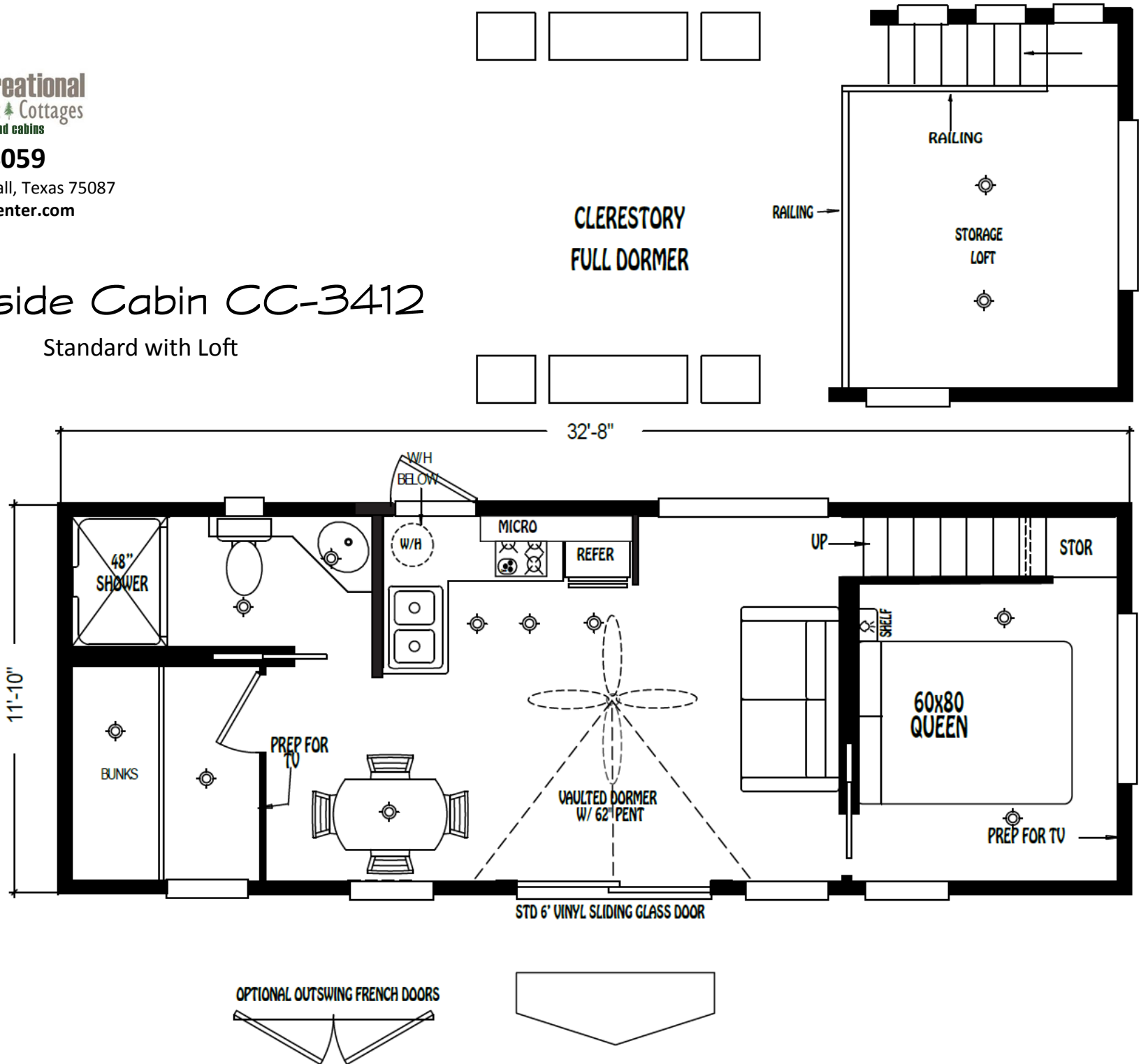
1-877-219-4059

4384 E I-30, Rockwall, Texas 75087

www.CabinSupercenter.com

Creekside Cabin CC-3412

Standard with Loft

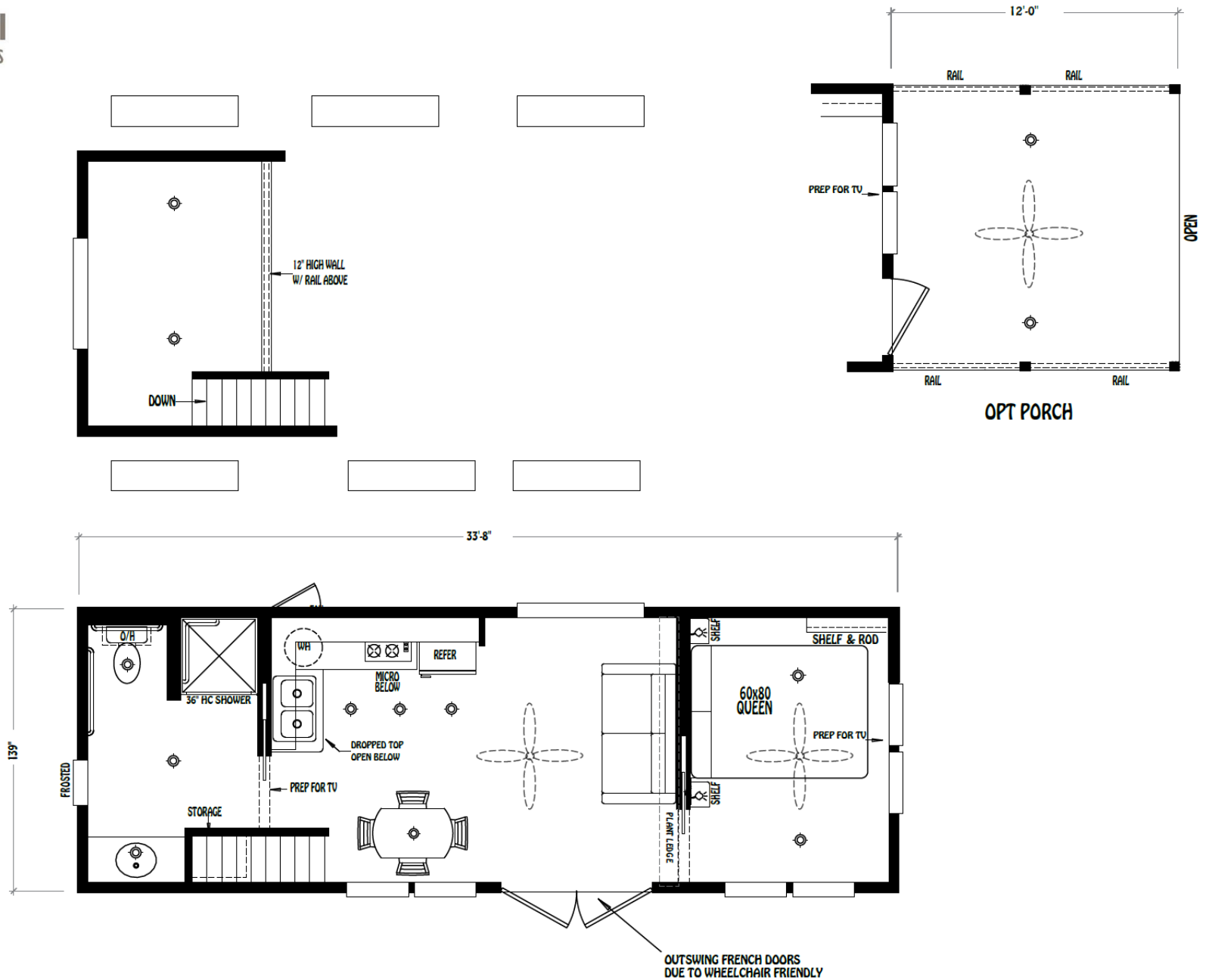




1-877-219-4059

4384 E I-30, Rockwall, Texas 75087

www.CabinSupercenter.com



Creekside Cabin CC-3612

Standard with Loft



1-877-219-4059

4384 E I-30, Rockwall, Texas 75087

www.CabinSupercenter.com

Creekside Cabins

Standard Features

INTERIOR

- 1"x6" T&G clear sealed spruce throughout
- Cathedral ceilings throughout except loft areas
- Real wood interior passage and pocket doors with heavy duty hardware
- 2" white faux mini blinds throughout except clerestory windows
- Woodgrain Congoleum Vinyl flooring throughout except stairway
- 1x sealed spruce trim throughout
- Upgrade lighting package
- Smoke detector
- Fire extinguisher
- LP Leak Gas Detector in units with propane
- Heavy steel welded and powder coated loft railing (per floorplan)
- Heavy steel welded and powder coated bunk railing (per floorplan)
- Heavy steel welded and powder coated bunk ladder (per floorplan)
- Satin fixtures throughout
- Vinyl cove base throughout
- Ceiling fan with light in main room
- Pre-wire on wall for TV
- 2-Bunk mattresses in bunk room (per floorplan)

KITCHEN / BATHROOM

- Laminate countertops and backsplashes
- Full appliance packages (per floorplan and specifications)
- Real wood cabinet doors and face frames with hidden hinges
- Choice of upgraded cabinet pulls
- Drawers with double steel roller guides
- Satin finish single lever kitchen faucet (Per Floorplan)
- Stainless steel kitchen sink (Per Floorplan)
- "Lasco" One piece fiberglass tub / shower or shower only
- Bathroom exhaust fan
- Microwave Oven

EXTERIOR

- Colored metal roof
- Stained "Certainteed" lap exterior siding with OSB wood wrap and building wrap
- 2"x4" Cedar exterior trim around windows and corners
- Black exterior lights at each door

- Beige vinyl framed low "E" dual glaze windows throughout
- Front and rear overhangs
- Exterior GFI receptacle

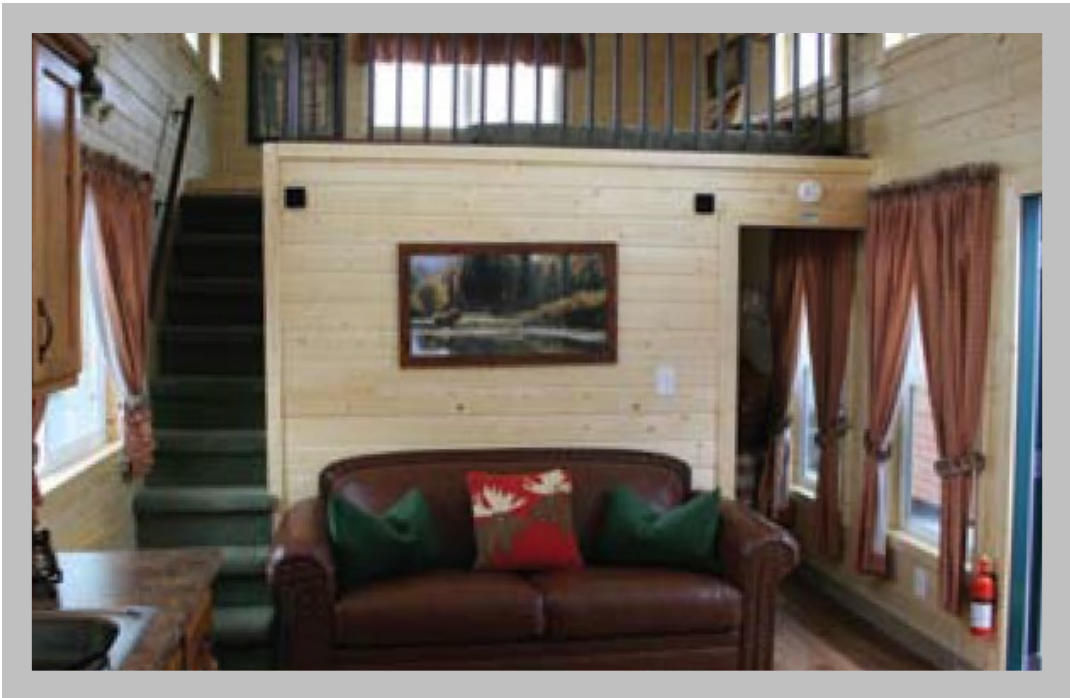
PLUMBING, ELECTRICAL, HEATING & INSULATION

- PEX waterlines with low point drain
- Residential style U.L. approved electrical devices throughout
- 30 or 50 amp exterior main panel service with supply cord
- Easy touch rocker light switches throughout
- R-14 fiberglass floor insulation
- R-11 fiberglass sidewall insulation
- R-33 cellulose blown insulation (per roof pitch)
- Black iron gas pipe run to front hitch end
- Under sink waterline shut-off valves
- 20 gallon electric water with metal pan and drain
- GFI protection in bath and kitchen
- 40,000 BTU propane gas furnace

CONSTRUCTION

- Full 10"/12" I-beam chassis construction
- Transverse 2" x 6" #2 or better fir floor joists 16" O.C.
- Detachable hitch from main chassis
- Woven simplex underbelly material
- OSB Wood Floor Decking
- 2" x 4" sidewalls 16" O.C.
- 30 gauge steel strapping for truss to sidewall and floor to sidewall strength
- Composite decking on porch models (Per Floorplan)
- NTA GREEN SEAL OF APPROVAL
- RPTIA approved
- ANSI approved





www.CabinSupercenter.com

1-877-219-4059